



- 2/3 bedroom House
- Galley Kitchen
- Large living room
- Modern bathroom

The Annex Upton House, Carters Road, Upton, Ryde, PO33 4BP

£750 pcm

This 2/3 bedroom Annexe is available for viewings straight away and for move in next week. Comprising of 2/3 bedrooms depending on how you want to use the rooms. Parking and use of the adjacent garden is offered along with some storage space. Viewings are by appointment only so please call today to book.



Property Description

KITCHEN

6' 10" x 5' 4" (2.09m x 1.64m) Window to side aspect. Gas Hob, Electric Oven. Selection of Floor and Wall units. Stainless steel sink with mixer tap over.

LIVING ROOM

16' 0" x 12' 6" (4.88m x 3.82m) TV Ariel points. Selection of double sockets, some with USB points. Storage cupboard.

BEDROOM 11

7' 0" x 16' 0" (2.14m x 4.88m)

BEDROOM 2

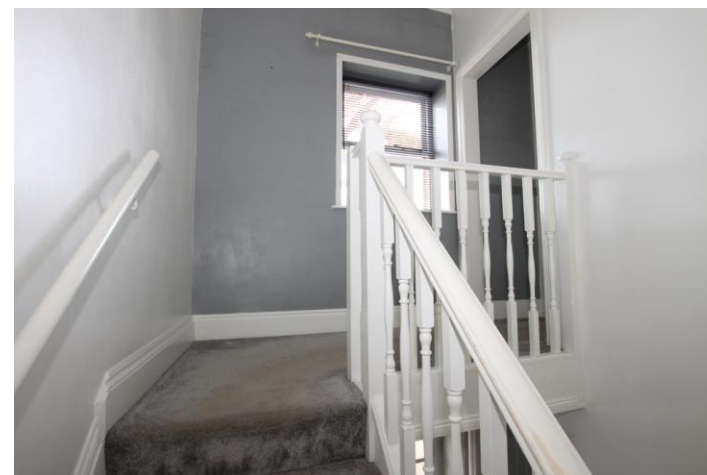
9' 9" x 8' 7" (2.99m x 2.62m)

BEDROOM 3

9' 10" x 6' 8" (3.01m x 2.04m)

BATHROOM

Bath with thermostatic mixer shower over. Sink. Low level W/C. Heated Towel Rail



Do you have a property to sell? We would welcome the opportunity to give you a free no obligation valuation of your home. Just ask!

41 High Street, Wootton Bridge,
Isle Of Wight, PO33 4LU

www.woottonestateagents.co.uk
lettings@woottonestateagents.co.uk
uk
01983 883333

All measurements are approximate and should not be taken as fact. Wootton Estate agents have not tested any of the appliances or equipment. We have been advised by the vendor as to the leasehold/freehold status of the property, you should have this along with all matters concerning the property checked by a solicitor. These particulars including all text and pictures are for guidance only and do not form any part of a contract or offer and should be not construed as statements of fact. Floor plans are for guidance only and no guarantee is given of their accuracy. Averages and land measurement are not measured by Wootton Estates and should be independently checked.